

Zebrafish arnt2 Antibody (Center)
Affinity Purified Rabbit Polyclonal Antibody (Pab)
Catalog # Azb10020a**Specification**

Zebrafish arnt2 Antibody (Center) - Product Information

Application	WB,E
Primary Accession	O9DG12
Reactivity	Zebrafish
Host	Rabbit
Clonality	Polyclonal
Isotype	Rabbit IgG
Antigen Region	475-501

Zebrafish arnt2 Antibody (Center) - Additional Information**Gene ID** 64277**Other Names**

Aryl hydrocarbon receptor nuclear translocator 2, ARNT protein 2, zfARNT2, arnt2
{ECO:0000312|ZFIN:ZDB-GENE-001207-3}

Target/Specificity

This Zebrafish arnt2 antibody is generated from rabbits immunized with a KLH conjugated synthetic peptide between 475-501 amino acids from the central region of zebrafish arnt2.

Dilution

WB~~1:1000

E~~Use at an assay dependent concentration.

Format

Purified polyclonal antibody supplied in PBS with 0.09% (W/V) sodium azide. This antibody is purified through a protein A column, followed by peptide affinity purification.

Storage

Maintain refrigerated at 2-8°C for up to 2 weeks. For long term storage store at -20°C in small aliquots to prevent freeze-thaw cycles.

Precautions

Zebrafish arnt2 Antibody (Center) is for research use only and not for use in diagnostic or therapeutic procedures.

Zebrafish arnt2 Antibody (Center) - Protein Information**Name** arnt2 {ECO:0000312|ZFIN:ZDB-GENE-001207-3}**Function** Transcription factor that plays a role in the development of the hypothalamo-pituitary axis. Specifically recognizes the xenobiotic response element (XRE) (By similarity). Isoform 1 acts

as a transcriptional activator (PubMed:[11072074](#)). Isoform 3 acts as a transcriptional repressor (PubMed:[10960127](#), PubMed:[11072074](#)).

Cellular Location

Nucleus.

Tissue Location

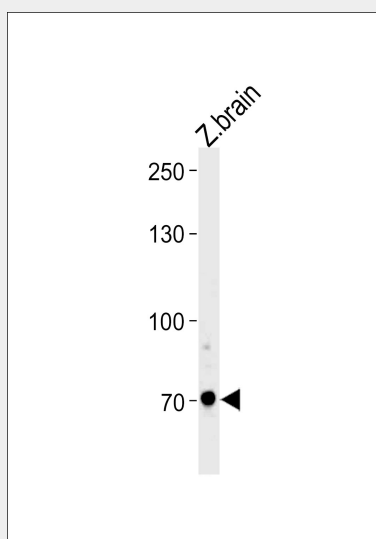
Isoform 1 and isoform 2 are most highly expressed in the brain, eye and skeletal muscle and to a lower degree in liver, heart, kidney and swim bladder. Isoform 3 is most highly expressed in the eye, forebrain, midbrain, hindbrain, skeletal muscle, gills and brain but is barely detectable in liver, heart, kidney and swim bladder. Before the pharyngula period isoform 3 is expressed throughout the entire embryo and during this period extensively in the brain and eye.

Zebrafish arnt2 Antibody (Center) - Protocols

Provided below are standard protocols that you may find useful for product applications.

- [Western Blot](#)
- [Blocking Peptides](#)
- [Dot Blot](#)
- [Immunohistochemistry](#)
- [Immunofluorescence](#)
- [Immunoprecipitation](#)
- [Flow Cytometry](#)
- [Cell Culture](#)

Zebrafish arnt2 Antibody (Center) - Images



Zebrafish arnt2 Antibody (Center) (Cat. #Azb10020a) western blot analysis in zebrafish brain tissue lysates (35ug/lane). This demonstrates the Zebrafish ARNT2 antibody detected the zebrafish ARNT2 protein (arrow).

Zebrafish arnt2 Antibody (Center) - Background

Specifically recognizes the xenobiotic response element (XRE). Isoform 1 acts as a transcriptional activator. Isoform 3 acts as a transcriptional repressor.

Zebrafish arnt2 Antibody (Center) - References

Tanguay R.L., et al. Biochim. Biophys. Acta 1494:117-128(2000).
Wang W.-D., et al. Mar. Biotechnol. 2:376-386(2000).